



eTwo®

Complete Face &
Body Renewal



Complete Skin
Renewal



elōs
results



elōs
safety

SYNERON  CANDELA®

"In my trials, I have found that the **Sublative** treatment from Syneron offers a unique combination of ablation and skin resurfacing leading to wrinkle reduction, skin tightening and even lifting with less downtime than traditional skin rejuvenating treatments.

My patients are pleased with the fast, visible results of smoother, brighter and tighter skin, without having to sacrifice time from their busy schedules."

Amy Taub, M.D.
Dermatologist, Illinois

Treat acne scars & striae

Treat facial wrinkles

Fractional skin resurfacing

Skin irregularities

eTwo combines the unique Sublime and Sublative applications for comprehensive facial rejuvenation in as little as a single treatment.

Sublime uses the eIōs combination of safe and effective levels of infrared light and bi-polar radiofrequency energies to remodel the deep dermal layer of the skin by stimulating new collagen growth.

- Improvement of wrinkles and skin irregularities
- Smoother skin appearance
- Based on safe and effective eIōs technology - a combination of energies that stimulates new collagen growth¹

Sublative fractionated bi-polar radiofrequency technology places the heat energy effectively into the upper dermis where it can produce a significant increase in collagen with minimal epidermal disruption.

- Improvement of textural irregularities, acne scars and striae
- Treat facial wrinkles
- Use on ALL skin types

Sublime and Sublative Combination Therapy

Wrinkles



Post 2 treatments
Ruthie Amir, M.D.

Wrinkles



Post 1 treatment
Brian Biesman, MD

Sublime

Wrinkles



Post 2 treatments
Ruthie Amir, M.D.

Sublative

Striae



Post 3 treatments
Tsai, M.D.

Wrinkles



Post 2 treatments
Ruthie Amir, M.D.

Acne Scars



Post 3 treatments
Sasha Jazayeri, MD

"In my experience, when treating patients with eTwo the results I see in skin texture and luminosity are consistently impressive."

Brian Biesman, M.D.
F.A.C.S., Tennessee

eTwo

Visible Improvement in as Little as a Single Treatment

Now eTwo has enhanced energy and a combined Sublative and Sublime treatment protocol for complete rejuvenation in fewer sessions.

User interface intuitive, easy-to-learn

Easily portable

2 applicators connected at once for easy treatment

Touchscreen 15 inch and foldable



Sublime Applicator



Sublative RF Applicator

The Technology of Sublime and Sublative

Sublime & Sublative: The Versatile Advantage

Sublime uses the elōs combination of IR and Bi-Polar RF to provide controlled deep dermal heating. This predictable heating of the deep dermis both stimulates and shortens aged collagen fibers, resulting in the immediate and long term improvement of wrinkles and facial contour.

The unique Sublative ergonomic applicator delivers bi-polar radio frequency energy via the matrix of electrodes of the disposable Sublative iD tip. This fractional delivery of RF energy causes micro-epidermal ablative injuries with wider spread dermal coagulation. This initiates a strong wound healing response in the dermal matrix while also minimizing the damage to the epidermis. Less affected tissue surrounding the matrix points may be stimulated by heat which helps accelerate the healing process, leading to a smoother, rejuvenated appearance of the skin.



Su-blime
[suh-blahym], noun.

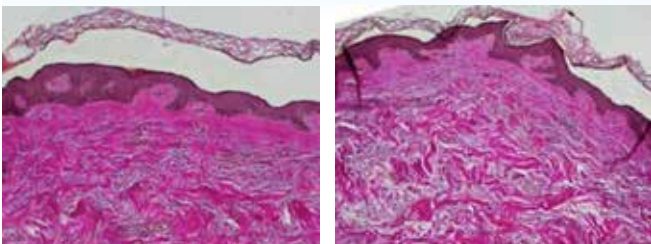
1. Non-invasive wrinkle treatment
2. elōs technology for safe and effective treatments
3. Fast treatment, immediate visible results



Sub-la-tive
[sah-bla-tiv], noun.

1. A new category of fractional skin treatments
2. High dermal impact, low epidermal disruption for all skin types
3. Minimal downtime, proven efficacy, satisfied patients

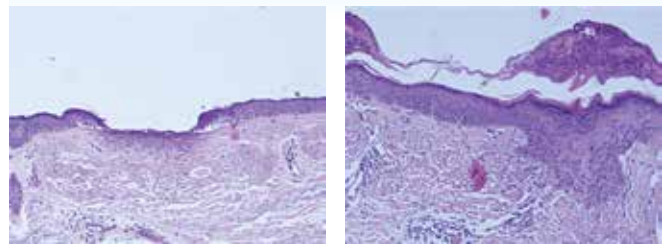
The Science of Sublime



Pre treatment

Deep dermal remodeling 3 months post treatment

The Science of Sublative



Histology showing single electrode immediate Sublative impact

Histology showing rapid healing and strong dermal remodeling only 4 days post a single treatment

Visible Results, Low Downtime

The promise of noticeable results with minimal downtime and lower procedure cost is spurring interest in fractional methods of skin rejuvenation. Patients are increasingly requesting these treatments to improve their appearance.

The eTwo system not only enables your practice to address this growing demand, but also adds non-invasive wrinkle treatment to your revenue stream.

Meet the Growing Demand

The eTwo system was designed with your practice in mind. Excellent ROI potential - lower acquisition and disposable costs, plus lowest overall cost of ownership compared to competitive products.

eTwo System – A Smart Choice

1. Intelligent Feedback System provides real time information on skin condition, impedance and the energy delivery of each pulse for consistency and reproducibility
2. Minimal downtime so patients can quickly resume their normal activities
3. Safe and effective for all skin types¹
4. Quick treatments: typically up to 1 hour depending on area treated in combined Sublative and Sublime protocol
5. Short treatment protocol: Visible improvement after the first session
6. Lightweight, compact device that easily transports between locations



Sublative RF™

Multiple Treatment Options, Exceptional Results - Dramatically improve texture, tone, wrinkles, acne scars and striae.¹

Sublative iD Tips

1. Intelligently designed tips to maximize treatment options and results
2. Re-connectable per treatment
3. Multiple tip configurations



Sublative iD Standard 64 pin tip
100 and 400 pulses per tip



Sublative iD Focal 44 pin tip
200 pulses per tip

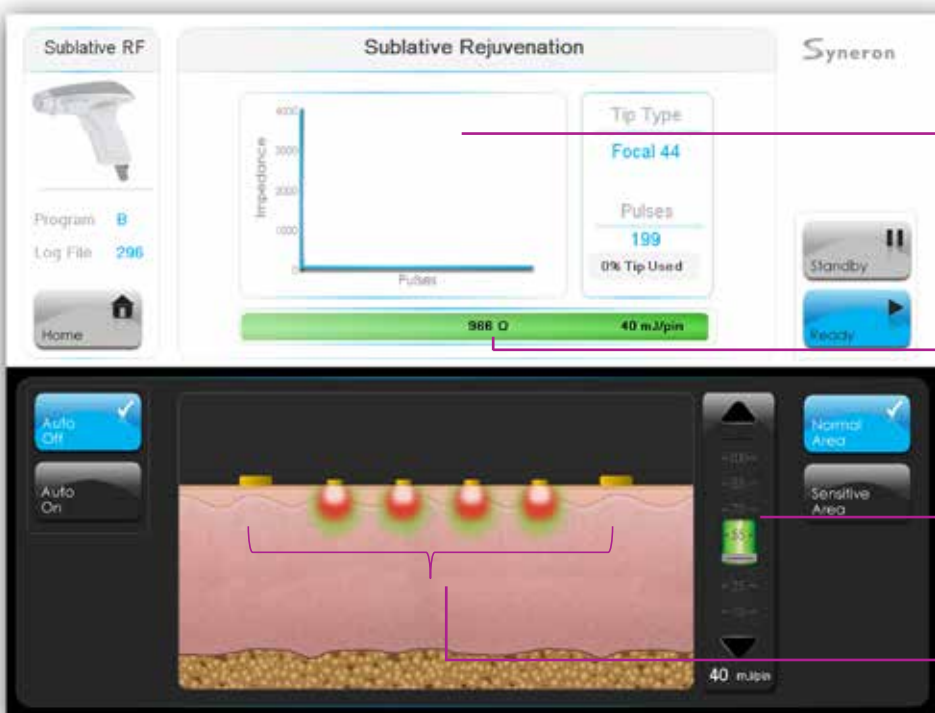
64 pin

1. Fast full face Sublative Rejuvenation for improved skin tone and texture
2. Multiple tip configurations for various treatment protocols

44 pin

1. Optimized electrode geometry for smaller areas and focused treatment on peri-orbital and peri-oral wrinkles
2. Focused treatment of acne scars and forehead wrinkles

Sublative RF Treatment Screen



Intelligent Feedback Graph

Shows a moving average of pulse to pulse impedance

Skin Feedback Meter

Shows skin condition and energy delivered

Full Energy Selection Bar

With highlighted program range

Scaled Impact Pattern

Shows depth and width of thermal damage

System Specifications

Sublative RF Energy	Up to 100 mJ/pin
Sublative RF iD Spot Size	Standard 64 - 12 x 12 mm Focal 44 - 11 x 3 mm
Disposable Sublative RF iD Tips	Standard 64 up to 400 pulses Focal 44 up to 200 pulses
Sublime Energy	Up to 200 J/cm ³
Sublime Spot Size	12 x 8 mm
User Interface	15" touch screen
System Dimensions Table Top	53 x 30 x 40 cm 21.8" x 11.8" x 15.7"
System Weight	8.5 kg / 18.7 lbs
Electrical Requirements	100-240 VAC; 3A; 50-60 Hz

eTwo



Syneron Candela is a leading global aesthetic device company with a comprehensive product portfolio and a global distribution footprint. The Company's technology enables physicians to provide advanced solutions for a broad range of medical-aesthetic applications including body contouring, hair removal, wrinkle reduction, tattoo removal, improving the skin's appearance through the treatment of superficial benign vascular and pigmented lesions, and the treatment of acne, leg veins and cellulite.

The Company sells its products under three distinct brands, Syneron, Candela and CoolTouch, and has a wide portfolio of trusted, leading products, including UltraShape, VelaShape, GentleLase, VBeam Perfecta, PicoWay, CO₂RE, CO₂RE Intima*, Profound and eIos Plus. Founded in 2000, the company markets, services and supports its products in 86 countries. It has offices in North America, France, Germany, Italy, Portugal, Spain, UK, Australia, China, Japan, and Hong Kong, and distributors worldwide.

SYNERON  CANDELA®

www.syneron-candela.com

* CO₂RE Intima is a module of CO₂RE.