

Happy endings are written at 134°C.
Unless of course you're a germ.



When your body fights infection, it drives up its temperature to make the environment less hospitable. SciCan's range of sterilizers also turn up the heat, to 134°C, to help eliminate viruses and microorganisms on your instruments. Patented technology speeds up instrument sterilization – to as much as 10x faster than most conventional chambered autoclaves. So the happy ending, is also a quick one.

Your Infection Control Specialist™

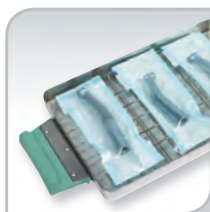
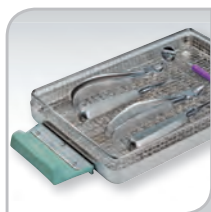
SciCan

08'00" MINS.

STATIM 2000S – The world's favorite handpiece autoclave.

STATIM® 2000S benefits:

- Ultra fast 8 minute unwrapped cycle
- 11 minute wrapped cycle
- Exceptional instrument turnover
- 10 minute Dri-Tec^C drying Technology
- Single use water
- Aseptic transfer of instruments directly to the point-of-use
- Reduced instrument investment
- Choice of external printer or datalogger
- Gentle on instruments
- EN13060 compliant



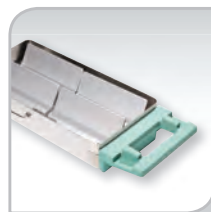
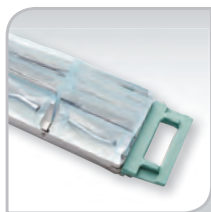
Dri-Tec^C
CONVECTION HEAT DRYING

11'00" MINS.

STATIM 5000S – The gentle autoclave

STATIM 5000S benefits:

- Ultra fast 11 minute unwrapped cycle
- 15.5 minute wrapped cycle
- Exceptional instrument turnover
- 15 minute Dri-Tec^R drying Technology
- Single use water
- Aseptic transfer of instruments directly to the point-of-use
- Reduced instrument investment
- Choice of external printer or datalogger
- Gentle on instruments
- EN13060 compliant



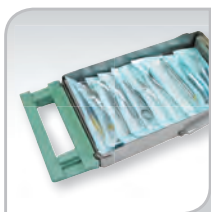
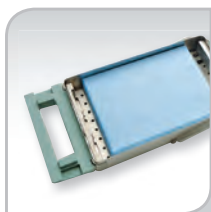
Dri-Tec^R
RADIANT HEAT DRYING

12'00 MINS.

STATIM 7000 – The chamber alternative

STATIM 7000 benefits:

- 12 minute unwrapped cycle
- 15 minute wrapped cycle
- 12 minute Dri-Tec^S drying Technology
- Operates on tap water
- Sterilizes up to 10 pouched packages
- Holds two 8" x 11" instrument management cassettes
- RFID seal technology
- Easy serviceability
- Removable water reservoir
- Choice of external printer or datalogger
- EN13060 compliant



Dri-Tec^S
STEAM HEAT DRYING

24'00 MINS.

BRAVO – The ultimate Statim companion.

BRAVO™ benefits:

- Fast cycle times
- Fractionated vacuum system
- Dri-Tec^V technology with closed door drying for a perfectly dry load every time
- Single use distilled water
- Pull'n Push filling and draining system
- Easy-to-use single button operation
- Choice of printer or datalogger
- Patented door locking mechanism and steam generation system
- 17L or 21L chamber capacity
- EN13060 compliant



Dri-Tec^V
VACUUM HEAT DRYING

Statim

Total Cycle time w/o drying [◇] Sterilisation time / temp	Solid Unwrapped 3.5 min./ 134°C	Hollow Unwrapped 3.5 min./ 134°C	Hollow Unwrapped 18 min./ 134°C	Hollow Wrapped 3.5 min./ 134°C	Hollow Wrapped 18 min./ 134°C	Ruber/ Plastic 15 min./ 121°C	Ruber/ Plastic 30 min./ 121°C
STATIM 2000S	6:45	8:05	22:35	10:40	25:10	18:40	33:40
STATIM 5000S	8:45	10:50	25:20	15:30	30:00	20:20	35:20
	Unwrapped 3.5 min./ 134°C	Unwrapped 18 min./ 134°C	Wrapped 3.5 min./ 134°C	Wrapped 18 min./ 134°C	Rubber / Plastic 30 min./ 121°C		
STATIM 7000	12:00	26:30	15:00	29:30	37:00		

Bravo

Total Cycle time with drying [◇] Sterilisation time / temp	Porous [‡] Wrapped 4 min./ 134°C	Hollow [‡] Unwrapped 4 min./ 134°C	Solid Wrapped 4 min./ 134°C	Solid Unwrapped 4 min./ 134°C	Porous [‡] Wrapped 20 min./ 121°C	Hollow [‡] Unwrapped 20 min./ 121°C	Solid Wrapped 20 min./ 121°C	Solid Unwrapped 20 min./ 121°C	18 min. Extended 18 min./ 134°C
Bravo ¹⁷	39:00	30:00	33:00	25:00	54:00	44:00	47:00	39:00	55:00
Bravo ^{17V}	30:00	24:00	23:00	17:00	45:00	38:00	37:00	31:00	44:00
Bravo ^{21V}	40:00	36:00	30:00	24:00	54:00	50:00	44:00	38:00	54:00

[◇]Cycle time is dependent on instrument load.

[‡]Hollow instruments type "A" and "B" according to EN 13060 (ie. dental handpieces, Phaco instruments, trocars, rigid scopes, etc.)

All cycles not available on all models.



STATIM

Unit size (L x W x H):

2000S: 48 cm x 41.5 cm x 15 cm or 19" x 16.25" x 6"
 5000S: 55.5 cm x 41.5 cm x 19 cm or 21.75" x 16.25" x 7.5"
 7000: 60.5 cm x 56.1 cm x 27.1 cm or 23.8" x 22.1" x 10.7"

Electrical Rating:

2000S: 220-240V, 50/60 Hz, 6A, 1100 W
 5000S: 220-240V, 50/60 Hz, 6A, 1100 W
 7000: 220-240V, 50/60 Hz, 15A, 3000 W



Sterilization Cassette Volume / Internal Dimension (volume / L x W x H):

2000S: 2.1 L / 28 cm x 18 cm x 3.5 cm or 0.5 gal / 11" x 7" x 1.5"
 5000S: 5.0 L / 38 cm x 18 cm x 7.5 cm or 0.8 gal / 15" x 7" x 3"
 7000: 6.3 L / 34.3 cm x 21.9 cm x 6.4 cm or 1.66 gal / 13.5" x 8.6" x 2.5"

Weight without water:

2000S: 21 kg / 46 lbs
 5000S: 33 kg / 72 lbs
 7000: 42 kg / 93 lbs



Bravo

Unit size (L x W x H):

17/17V: 56 cm x 48 cm x 42 cm or 22" x 19" x 16.5"
 21V: 63.5 cm x 48 cm x 42 cm or 25" x 19" x 16.5"

Electrical Rating:

220/230V, 50 Hz, 10A, 2300 W
 220/240V, 60 Hz, 10A, 2300 W

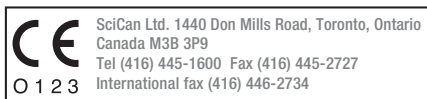
Sterilization Chamber Volume / Internal Dimension (volume / D x L):

17/17V: 4.5 gal / D10" x 13.5" or 17 L / D25.4 cm x 34.3 cm
 21V: 5.5 gal / D10" x 17.5" or 21 L / D25.4 cm x 44.5 cm

Weight without water:

17: 55 kg / 121 lbs
 17V: 58 kg / 128 lbs
 21V: 63 kg / 139 lbs

Visit www.scican.com or call us toll-free for more information today



CANADA: SciCan Ltd. 1440 Don Mills Road, Toronto, Ontario M3B 3P9 / Phone (416) 445-1600 Fax (416) 445-2727 Toll free 1-800-667-7733 custservice.ca@scican.com

GERMANY: EU Representative: SciCan GmbH, Wangener Strasse 78, 88299 Leutkirch, Germany, Tel.: +49 (0)7561 98343 - 0 Fax: +49 (0)7561 98343 - 699

SWITZERLAND: SciCan Medtech AG, Alpenstrasse 16, 6300 ZUG, Switzerland, Tel: +41 (0) 41 727 7027 Fax: +41 (0) 41 727 7029

USA: SciCan, Inc. 701 Technology Drive, Canonsburg PA, 15317 / Phone (724) 820-1600 Fax (724) 820-1479 Toll free 1-800 572-1211 uscustmerservice@scican.com

STATIM and STATIM Cassette Autoclave, are registered trademarks of SciCan Ltd.

Bravo, Dri-Tec[®], Dri-Tec[®], Dri-Tec[®], Dri-Tec[®] logos and Your Infection Control Specialist are trademarks of SciCan Ltd.